

## Wireless Printer Installation Instructions:

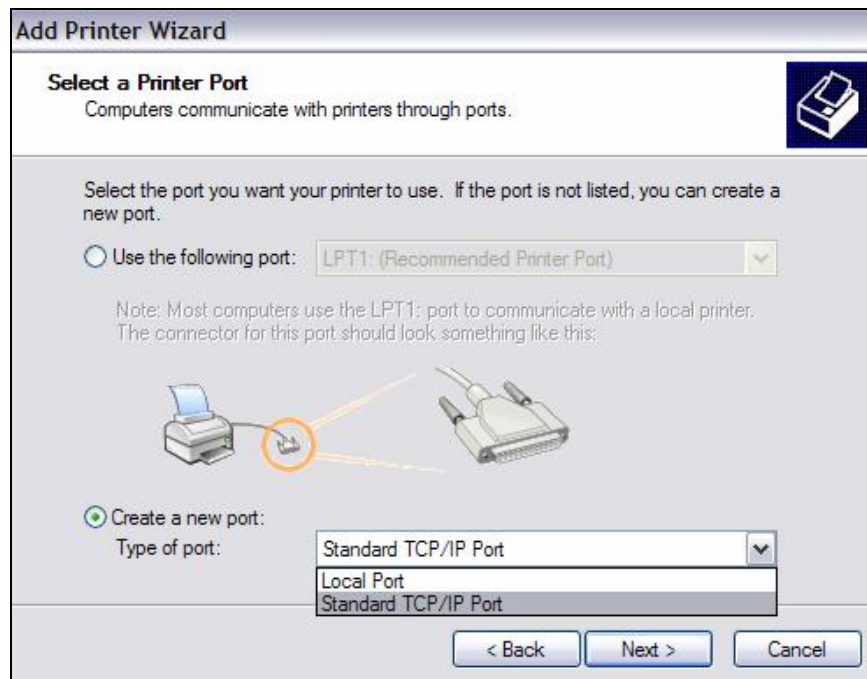
To Start: Under **Settings: Printers and Faxes**, select the “**Add Printer**” option.

This will open the **Add Printer Wizard**.



In the **Local or Network Printer** window select the **Local Printer attached to this computer** option (the 1<sup>st</sup> option) while de-selecting the **Automatically detect and install my Plug and Play Printer** sub-option.

Click on **Next**.



In the **Select a Printer Port** window select the **Create a New Port** option. **Type of Port** drop down menu will open. Select **Standard TCP/IP Port**.

Click on **Next**



The **Add Standard TCP/IP Printer Port Wizard** will open. Click on **Next**.



In the **Add Port** window type in the following in the **Printer Name or IP Address** box:

**192.168.200.1**

Click on **Next**.



The **Additional Port Information Required** window will open. Simply click on **Next**.



Click **Finish**.



The **Install Printer Software** window will open. Select **HP** under **Manufacturer**. Select **HP LaserJet 4000 Series PS** under **Printers**.

Click **Next**.

\*If **Use Existing Driver** window opens, simply click **Next**. If not, proceed to next step.



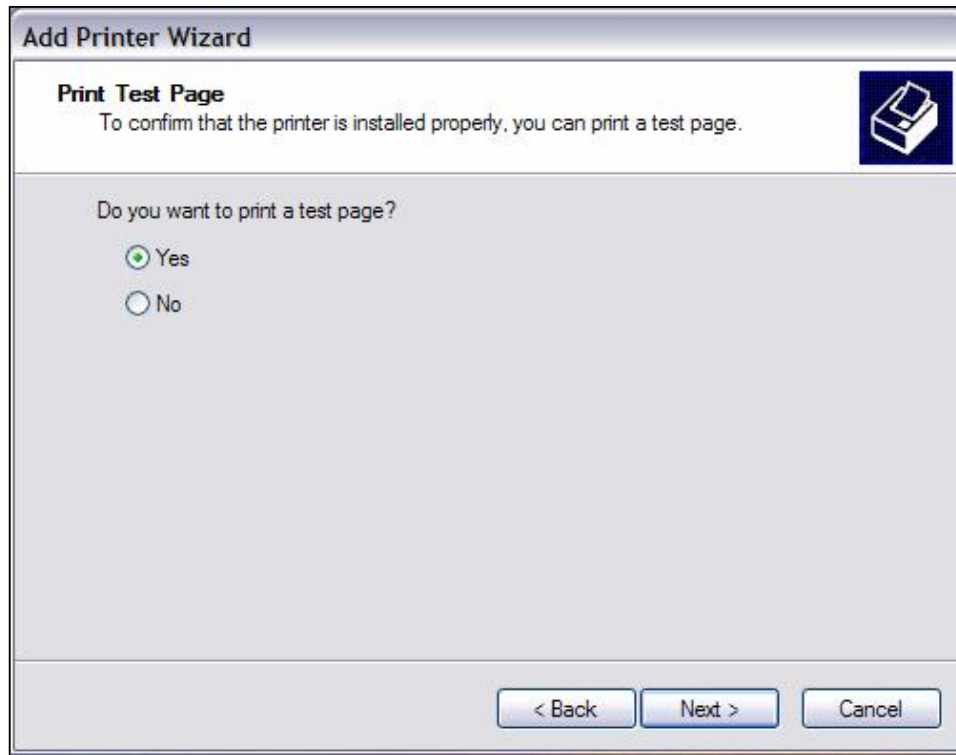


The **Name Your Printer** window opens. Enter in whatever name you wish to assign the printer (such as “AGTS WiFi”). Determine whether or not you want this printer set up as your default.

Click **Next**.



The **Printer Sharing** window opens. Simply click on **Next**.



Select **Yes** on the **Print Test Page** window and click on **Next**.



Click on **Finish**