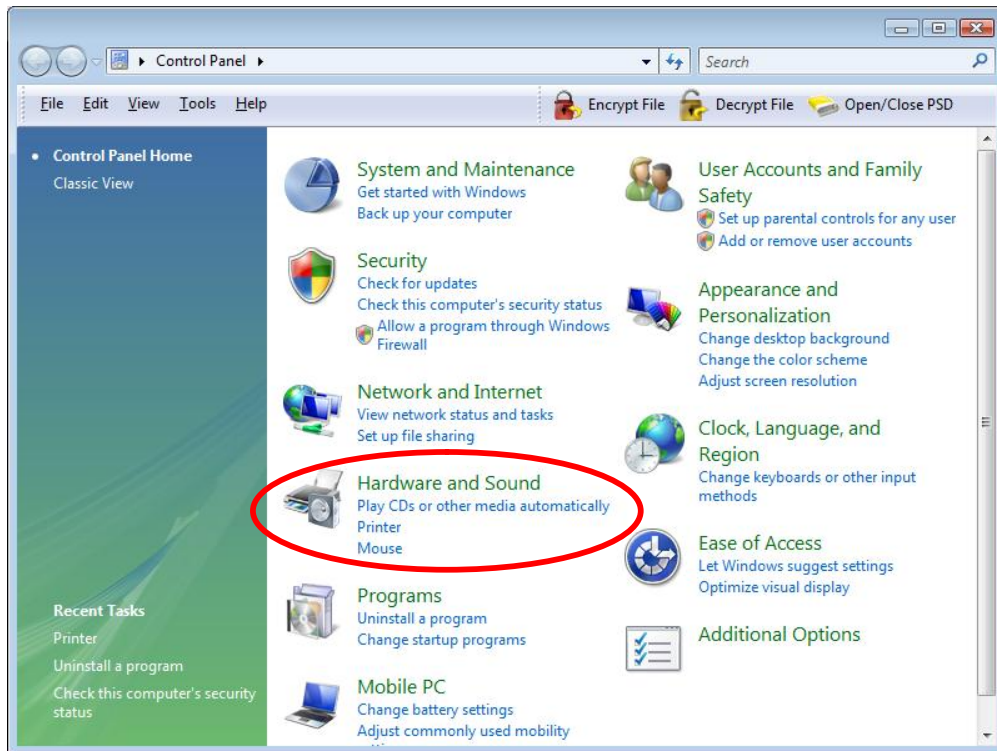
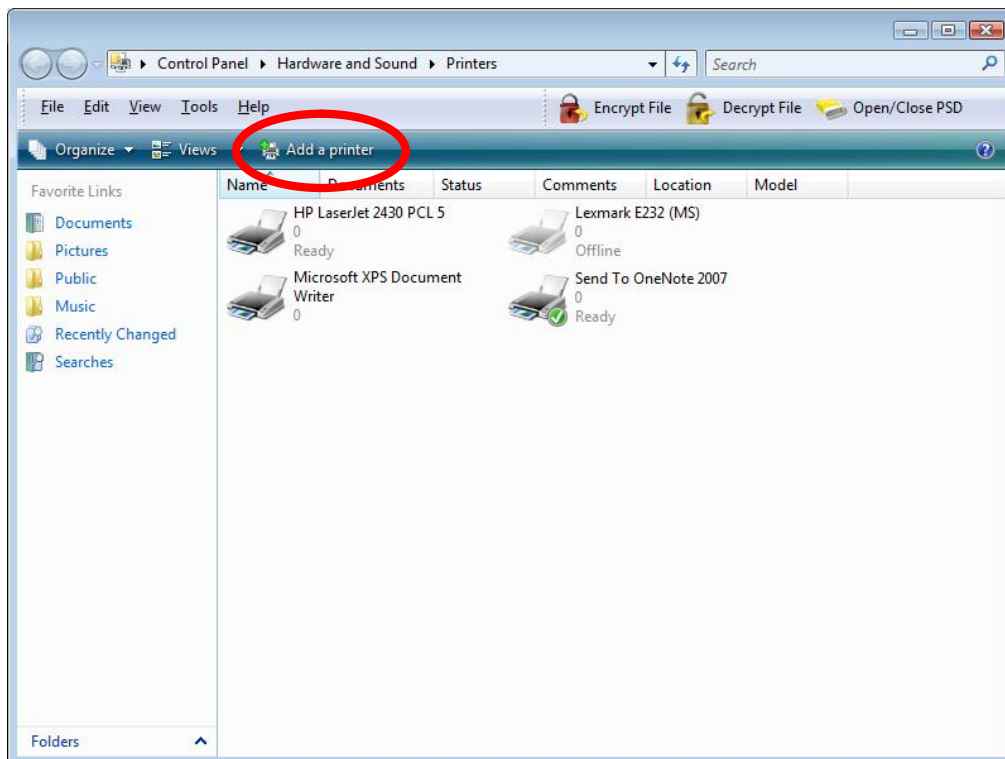


Wireless Printer Installation Instructions for Windows Vista users:

To Start: Under **Control Panel: Hardware and Sound** select the “**Printer**” option.

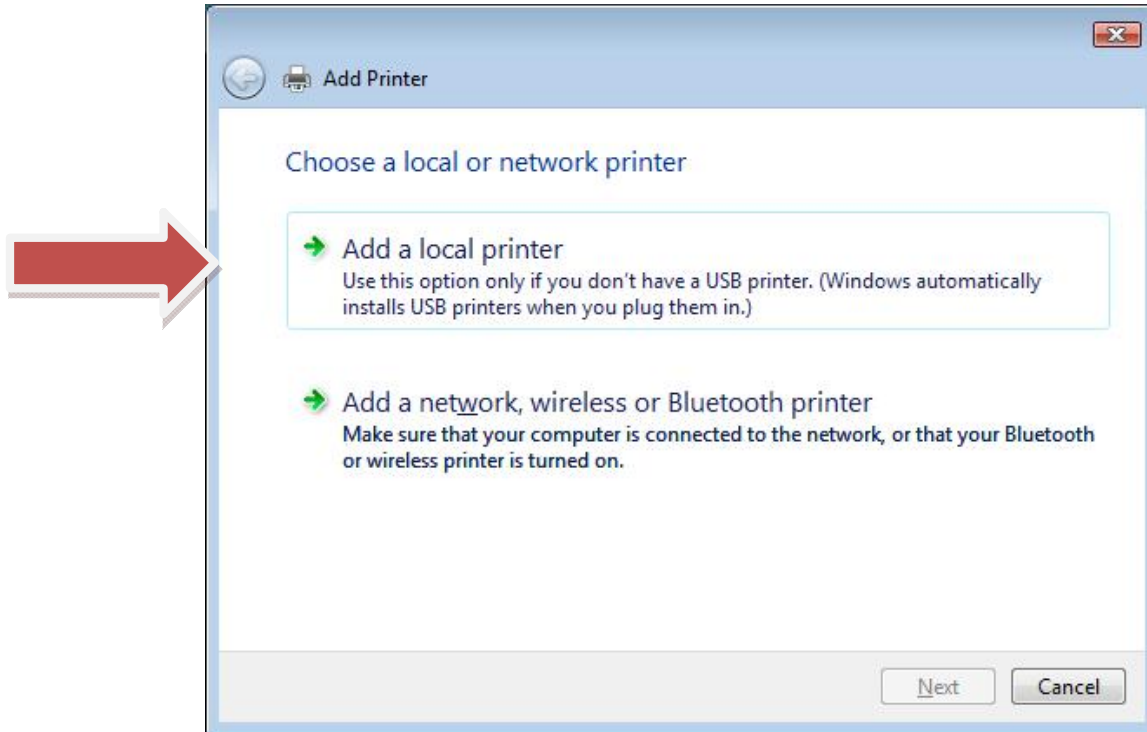


In the Control Panel: Hardware view click on **Add a Printer**



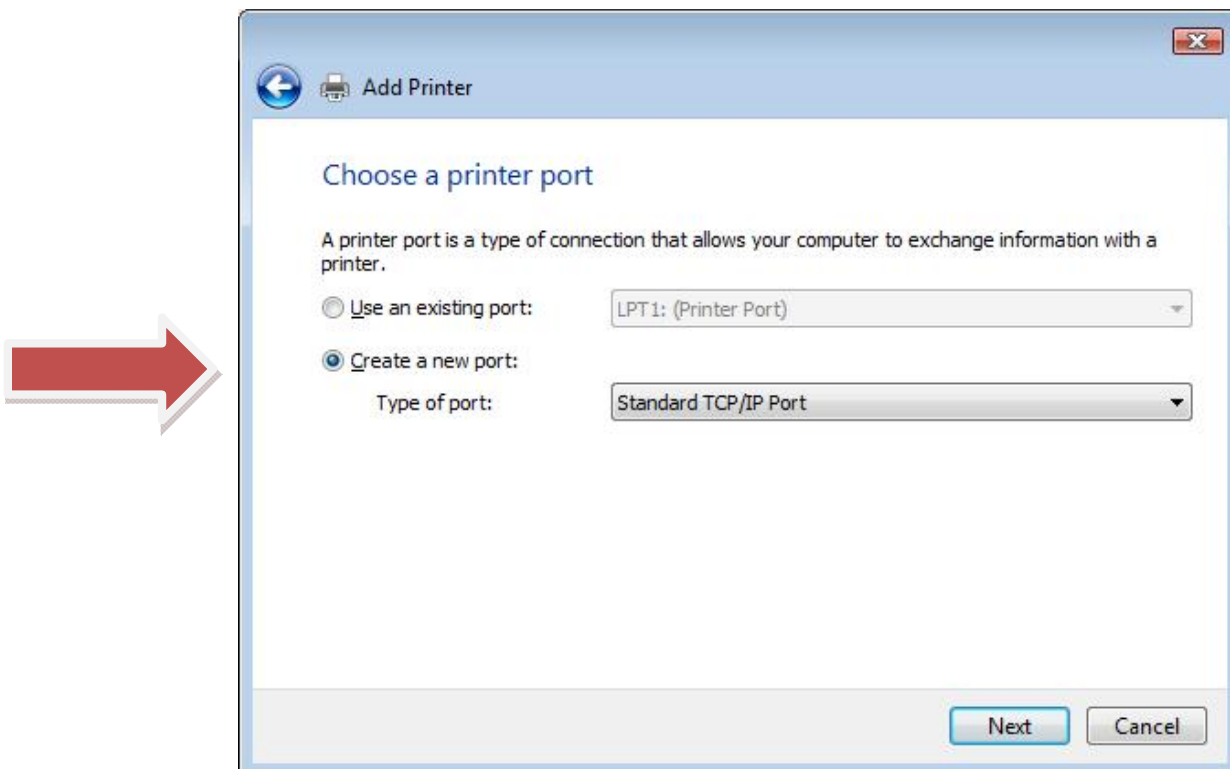
In the **Add Printer** window select **Add a local printer** (the 1st option)

Click on **Next**.



In the **Choose a Printer Port** window select the **Create a New Port** option. A **Type of Port** drop down menu will open. Select **Standard TCP/IP Port**.

Click on **Next**.



In the **Type a printer hostname or IP address** window: For Device type, scroll down to **TCP/IP Device**. For Hostname or IP address type the following: **192.168.200.1** (Note: Do not type anything in the port name it will fill in automatically while you type in the Hostname IP address) Place a check mark in the Query the printer box. Click on **Next**.

Device type: TCP/IP Device

Hostname or IP address: 192.168.200.1

Port name: 192.168.200.1_1

Query the printer and automatically select the driver to use

Next Cancel

The **Additional Port Information Required** window will open. Simply click on **Next**

The detected device is of unknown type. Be sure that:

1. The device is properly configured.
2. The address on the previous page is correct.

Either correct the address and perform another search on the network by returning to the previous wizard page or select the device type if you are sure the address is correct.

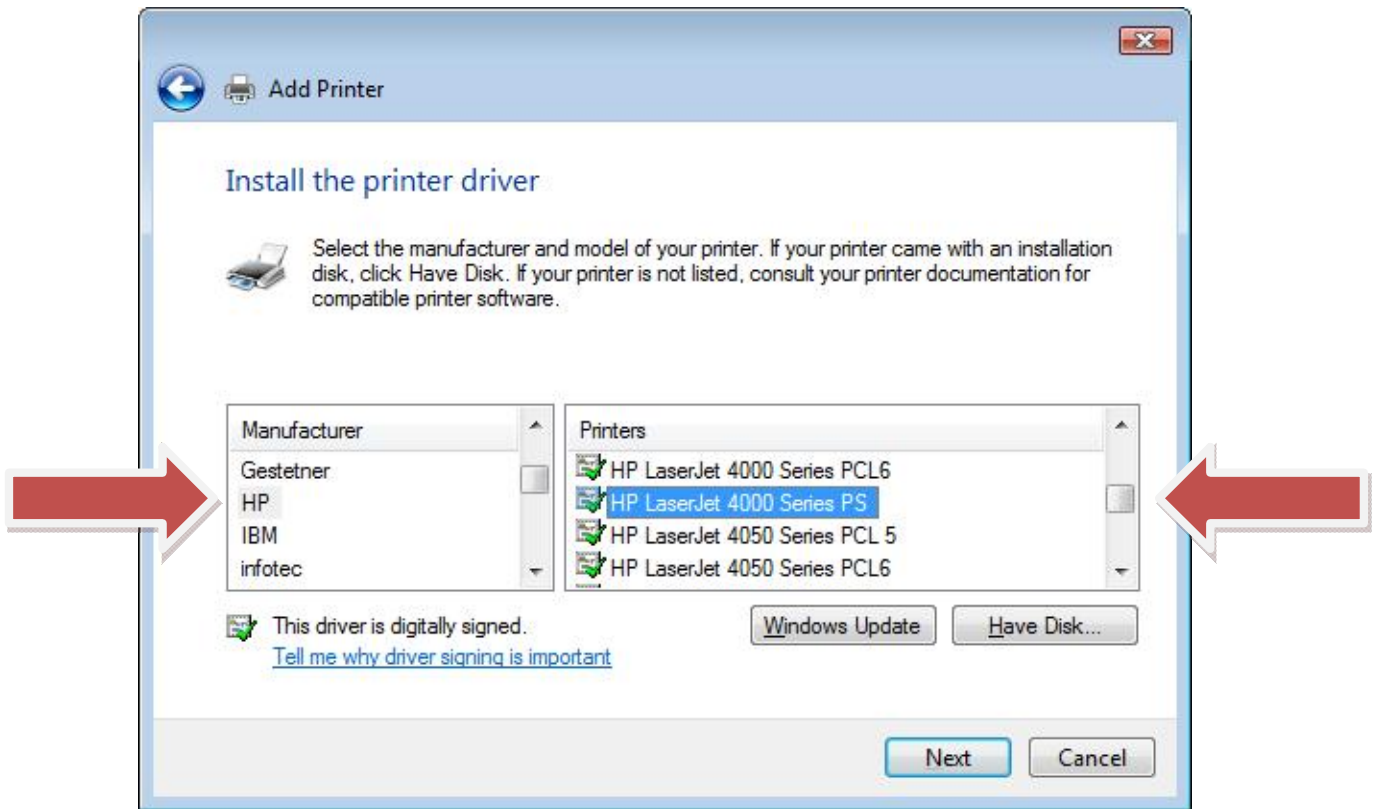
Device Type

Standard Generic Network Card

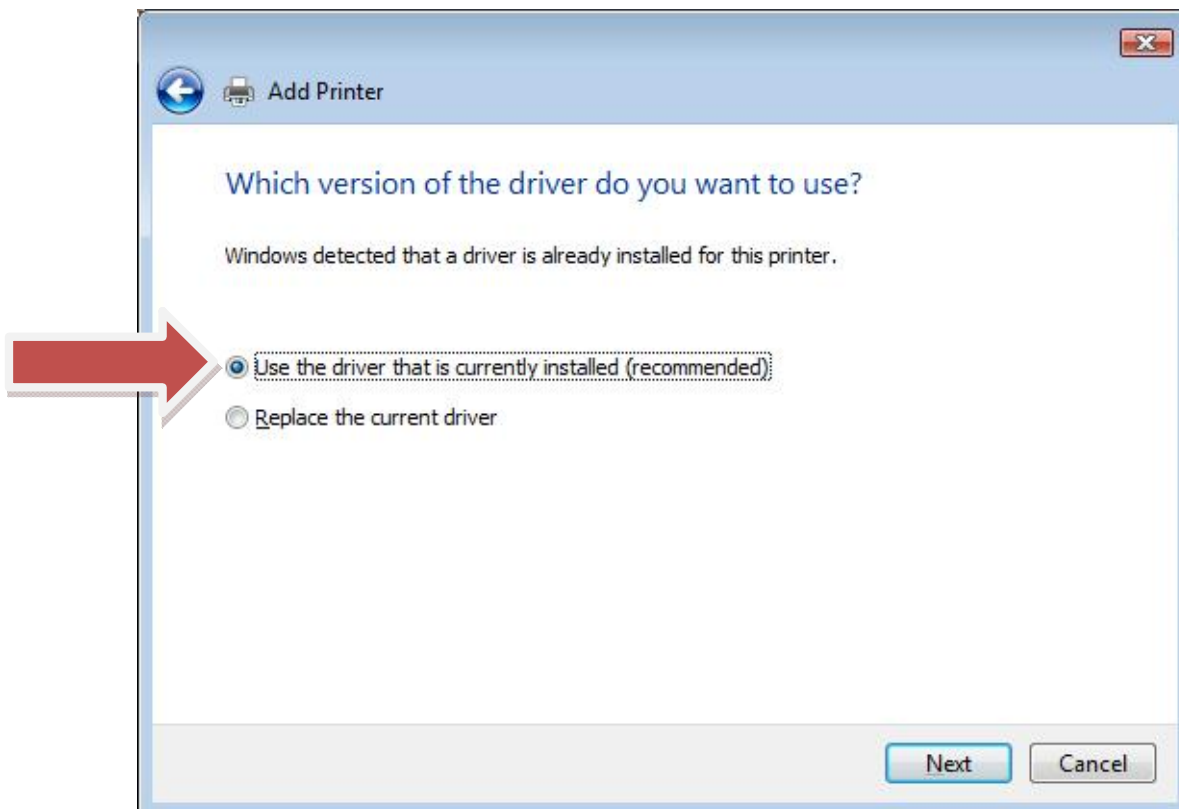
Custom Settings...

Next Cancel

In the **Install the printer driver** window select **HP** under the manufacturer and **HP LaserJet 4000 Series PS** as the printer. Click on **Next**.

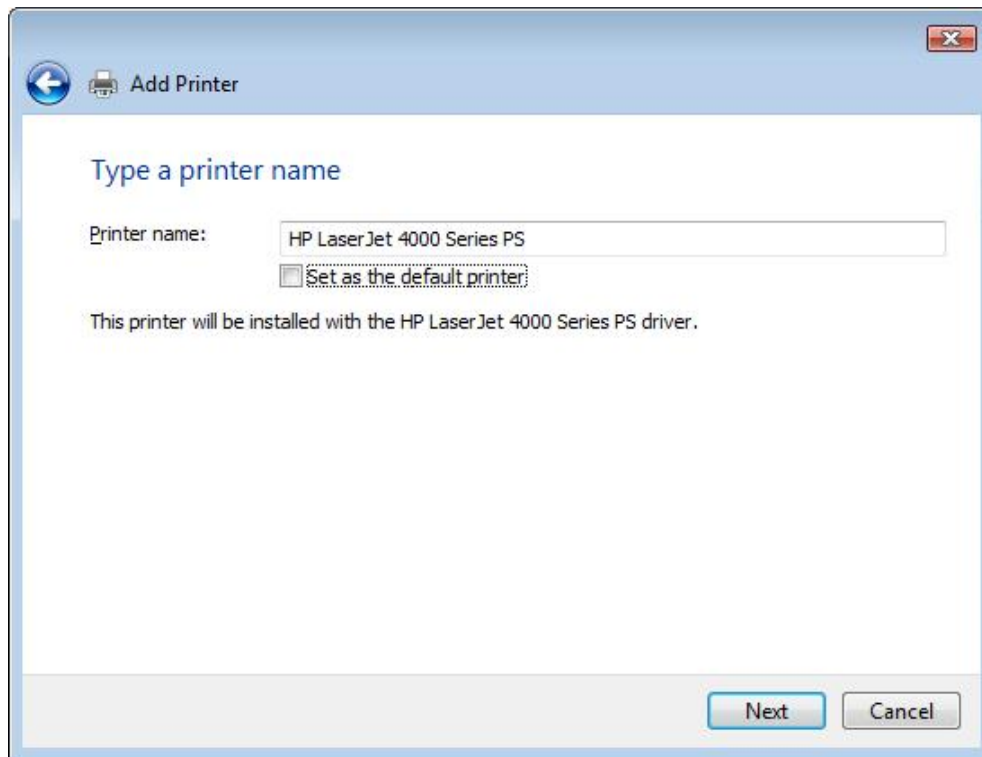


Use the driver that is currently installed (recommended). Click on **Next**.

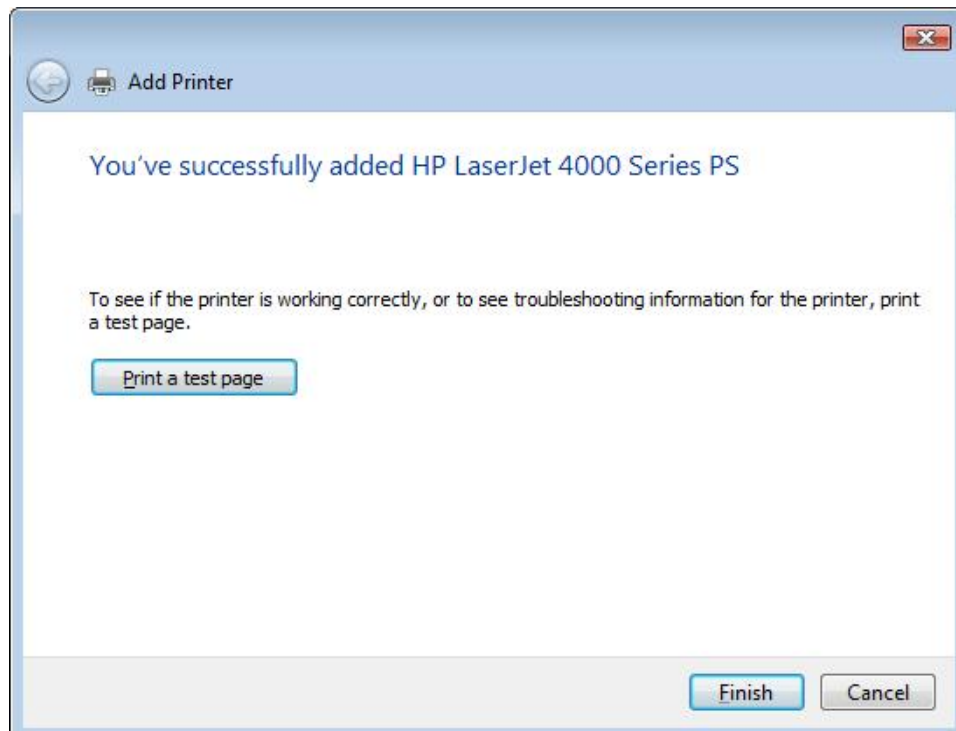


The **Type a printer name** window will open. The HP Laser Jet 4000 Series PS should appear in the box. You can enter another name if you want to and choose if you want the printer to be your default printer.

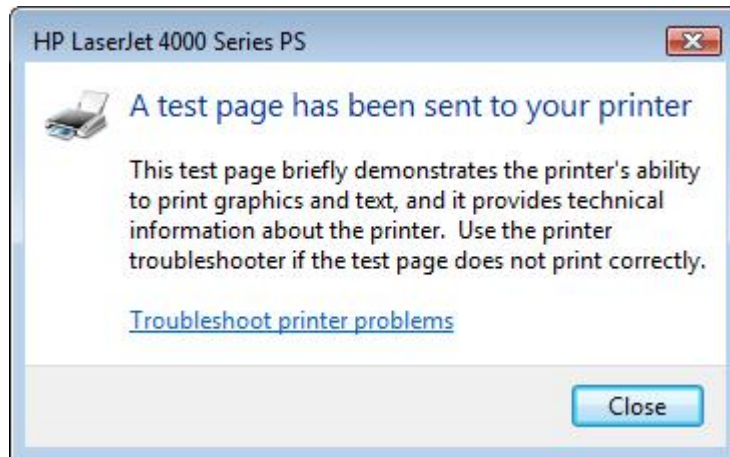
Click on **Next**.



The next window that will appear informs you that you successfully added the wireless printer. Click on the **Print a test page**.



The **Test page** window will open, once you retrieve your test page from the printer. Click on **Close**.



The **Successfully added HP Printer** window will open. Simply click on **Finished**.

